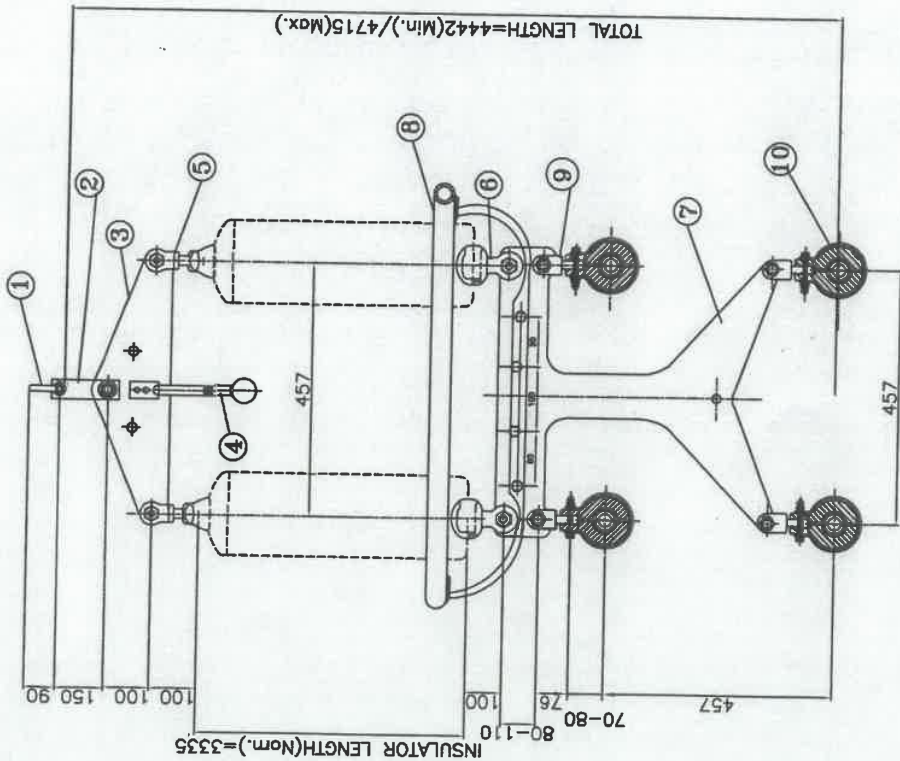


TECHNICAL DETAILS:

- 1) ALL DIMENSIONS ARE IN MM.
- 2) GENERAL TOLERANCES : ±3%.
- 3) ALL FERROUS PARTS HOT DIP GALVANISED & SPRING WASHER ELECTRO GALVANISED AS PER POWERGRID SPECIFICATION.
- 4) ALL DIMENSIONS ARE AFTER GALVANISATION EXCEPT DRILLED HOLES.
- 5) HARDWARE TOLERANCES ON LENGTH ±2%.



**POWER GRID CORPORATION
OF INDIA LIMITED**
(A GOVERNMENT OF INDIA ENTERPRISE)



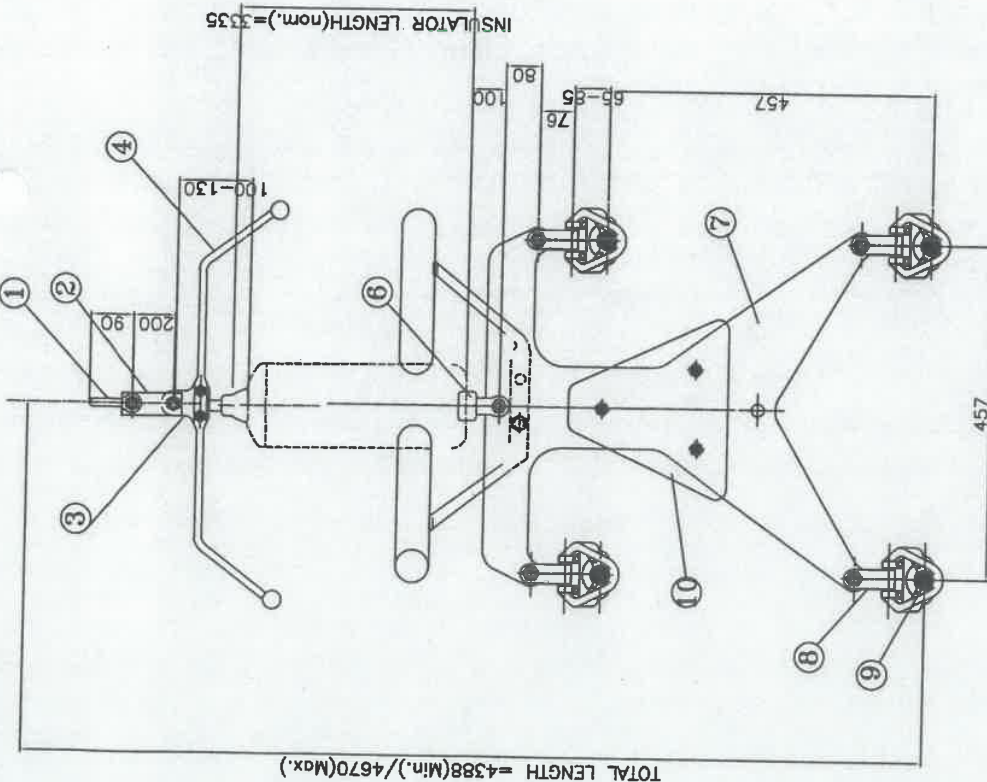
**TITLE:- 400 KV DOUBLE I SUSPENSION STRING
FOR QUADRUPLE ACSR MOOSE CONDUCTOR.
UTS-240 KN**

CLEARED BY

<i>[Signature]</i> SR. GM (ENGG-TL)	<i>[Signature]</i> CGM (ENGG-TL)	<i>[Signature]</i> ED (ENGG)
14/11/19 DATE	<i>[Signature]</i> MGR. (ENGG-TL)	<i>[Signature]</i> CH. MGR. (ENGG-TL)

DRG. NO.:- CC:ENGG:TL/HW/400 KV/QUAD/DIS

Sr. No.	DESCRIPTION	PART NO.	UTS	QTY.	REF
10	SUSPENSION CLAMP(AGS)	AGS-MOUSE	70 KN	4	AGS-001
9	CLEVIS EYE	CE-90-01	90 KN	4	CE-001
8	CORONA RING	CR-400-02	----	1	CR-001
7	YOKE PLATE	YP-C-Q-240-01	240 KN	1	YP-C-Q-001
6	SOCKET CLEVIS	SC-120-01	120 KN	2	SC-001
5	BALL CLEVIS	BC-120-01	120 KN	2	BC-001
4	ARCING HORN (BALL)	AH-BL-02B	----	2	AHB-001
3	YOKE PLATE	YP-TR-240-02A	240 KN	1	YP-TR-001
2	Y-STRAP	YS-240-01	240 KN	1	YS-001
1	ANCHOR SHACKLE	AS-240-01	240 KN	1	AS-001
					DRG:CC:ENGG:TL/HW



TECHNICAL DETAILS:

- 1) ALL DIMENSIONS ARE IN mm.
- 2) GENERAL TOLERANCES : ±3%.
- 3) ALL FERROUS PARTS HOT DIP GALVANISED & SPRING WASHER ELECTRO GALVANISED AS PER POWERGRID SPECIFICATION.
- 4) ALL DIMENSIONS ARE AFTER GALVANISATION EXCEPT DRILLED HOLES.
- 5) HARDWARE TOLERANCES ON LENGTH ±2%.

**POWER GRID CORPORATION
OF INDIA LIMITED**
(A GOVERNMENT OF INDIA ENTERPRISE)



**TITLE:- 400 KV SINGLE I SUSPENSION PILOT STRING
SUITABLE FOR QUADRUPLA ACSR MOOSE CONDUCTOR.**

UTS-120 KN

CLEARED BY

 SR. CM (ENGG-TL)	 CGM (ENGG-TL)	 ED (ENGG)
 MGR (ENGG-TL)	 CH. MGR (ENGG-TL)	 GM (ENGG-TL)
14.11.19	21.5.21	 MGR (ENGG-TL)
DATE	MGR. (ENGG-TL)	DATE

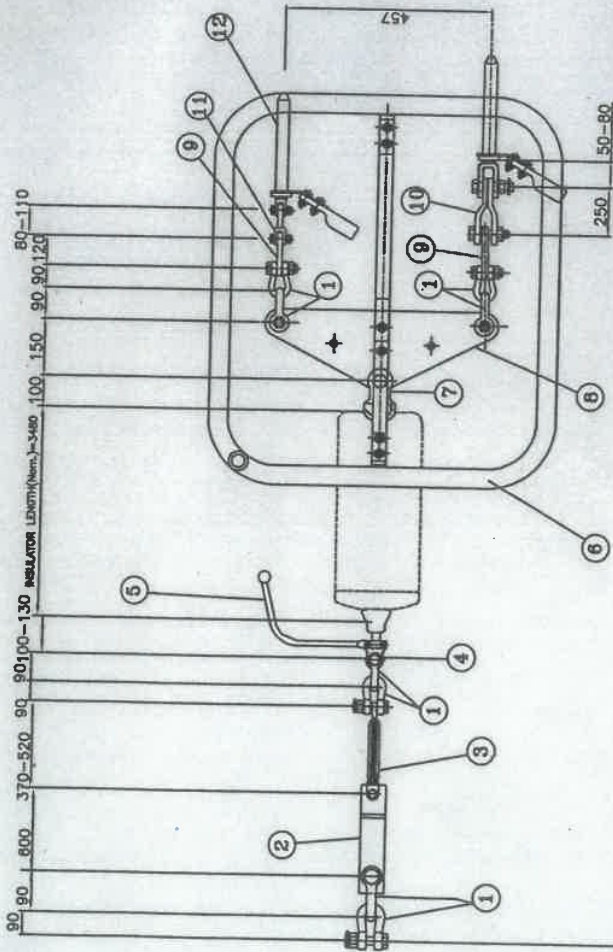
DRG. NO. :- CC:ENGG:TL/HW/400 KV/QUAD/SISP

Sr. No.	DESCRIPTION	PART NO.	UTS	QTY.	REF
10	COUNTER WEIGHT ASSEMBLY	CW-01	----	1	SET
9	SUSPENSION CLAMP	ENV-MDOSE	70 KN	4	ENV-001
8	CLEVIS EYE	CE-90-01	90 KN	4	CE-001
7	YOKE PLATE	YP-C-Q-120-02	120 KN	1	YP-C-Q-001
6	SOCKET CLEVIS	SC-120-01	120 KN	1	SC-001
5	CORONA RING	CR-400-01	----	1	CR-001
4	ARCING HORN (BALL)	AH-BL-01B	----	1	AHB-001
3	BALL EYE (HORN HOLDER)	BE-120-01	120 KN	1	BE-001
2	Y-STRAPE	YS-120-01	120 KN	1	YS-001
1	ANCHOR SHACKLE	AS-120-01	120 KN	1	AS-001
	DESCRIPTION	PART NO.	UTS	QTY.	REF

DRG:CC:ENGG:TL/HW

TECHNICAL DETAILS:

- 1) ALL DIMENSIONS ARE IN MM.
- 2) GENERAL TOLERANCES : ±3%
- 3) ALL FERROUS PARTS HOT DIP GALVANISED & SPRING WASHER ELECTRO GALVANISED AS PER POWERGRID SPECIFICATION.
- 4) ALL DIMENSIONS ARE AFTER GALVANISATION EXCEPT DRILLED HOLES.
- 5) HARDWARE TOLERANCES ON LENGTH ±2%.
- 6) CLEVIS EYE NOT REQUIRED IF DEAD END ASSEMBLY INCLUDES ANCHOR SHACKLE



TOTAL LENGTH = 5873(Min.) / 6412(Max.)

Sr. No.	DESCRIPTION	PART NO.	UTS	QTY.	REF
13	SPACER (250 mm)	RS-250-MD05E	----	1	RS-001
12	COMPRESSION DEADEND	CDE-MD05E	----	4	CDE-002
11	CLEVIS EYE	CE-160-01	160 KN	2	CE-001
10	Y-STRAP	YS-160-02	160 KN	2	YS-001
9	YUKE PLATE	YP-TR-80-01	80 KN	2	YP-TR-001
8	YUKE PLATE	YP-TR-120-06	120 KN	1	YP-TR-001
7	SOCKET CLEVIS	SC-120-01	120 KN	1	SC-001
6	CURONA RING	CR-400-03C	----	2 SETS	CR-002
5	ARCING HORN (BALL)	AH-BL-03B	----	1	AHB-001
4	BALL EYE (HORN HOLDER)	BE-120-01	120 KN	1	BE-001
3	TURN BUCKLE	TB-120-01	120 KN	1	TB-001
2	Y-STRAP	YS-120-02	120 KN	1	YS-001
1	ANCHOR SHACKLE	AS-120-01	120 KN	8	AS-001
	DESCRIPTION	PART NO.	UTS	QTY.	REF

POWER GRID CORPORATION OF INDIA LIMITED
(A GOVERNMENT OF INDIA ENTERPRISE)



TITLE:- 400 KV. SINGLE TENSION STRING SUITABLE FOR QUADRUPLE ACSR MOOSE CONDUCTOR. UTS-120 KN

CLEARED BY

SR. GM (ENGG-TL)

 CGM (ENGG-TL)

 MGR (ENGG-TL)

 ED (ENGG)

 GM (ENGG-TL)

14.11.19

DATE

DRG. NO. :- CC:ENGG:TL/HW/400 KV/QUAD/ST

